



COMPLEXITY AVERTED. POSSIBILITIES REALIZED.

# Secure Network Transformation

powered by

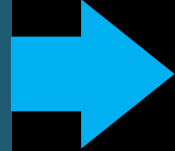


IMPROVING SECURITY, AGILITY, RESILIENCE



## Our evolution

2020



Present

Your trusted guide to

# Secure Digital Transformation

Security  
Minded

Technology  
Focused

Results  
Driven

2019

Security Managed Services

2016

Cybersecurity Solutions

2013

Cloud & Cloud Managed Services

2009

Managed Network Services

2005

Network Enablement

2003

Startup: Telecom Integrator



- Over 20-year history
- Cybersecurity, cloud & connectivity focused
- World-class architecture & engineering
- 10,000+ world-wide deployments
- Broad partnerships with top providers
- Big enough to be a global force, small enough to be agile and accessible
- Experience across multiple industries:



FINANCIAL SERVICES



HEALTHCARE



MANUFACTURING



RETAIL



FOOD SVC. & HOSPITALITY

CLIENTS SERVED

1,000+

CLIENTELE PRESENCE

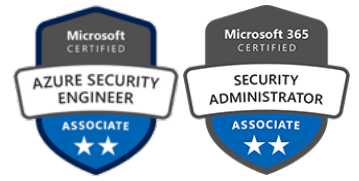
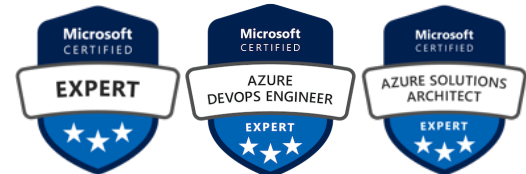
73

COUNTRIES

GLOBAL SOC & NOC

03

US & EUROPE



# Lightstream

## Certified & recognized by our partners & industry



## Google Cloud Partner



# Secure Network Transformation

“Secure network transformation occurs when proactively implementing cybersecurity principles, technologies, and integrating with the business leaders. This will significantly improve cyber maturity and facilitate stronger business alignment.

**Ron Darnall**  
Lightstream - VP, Services

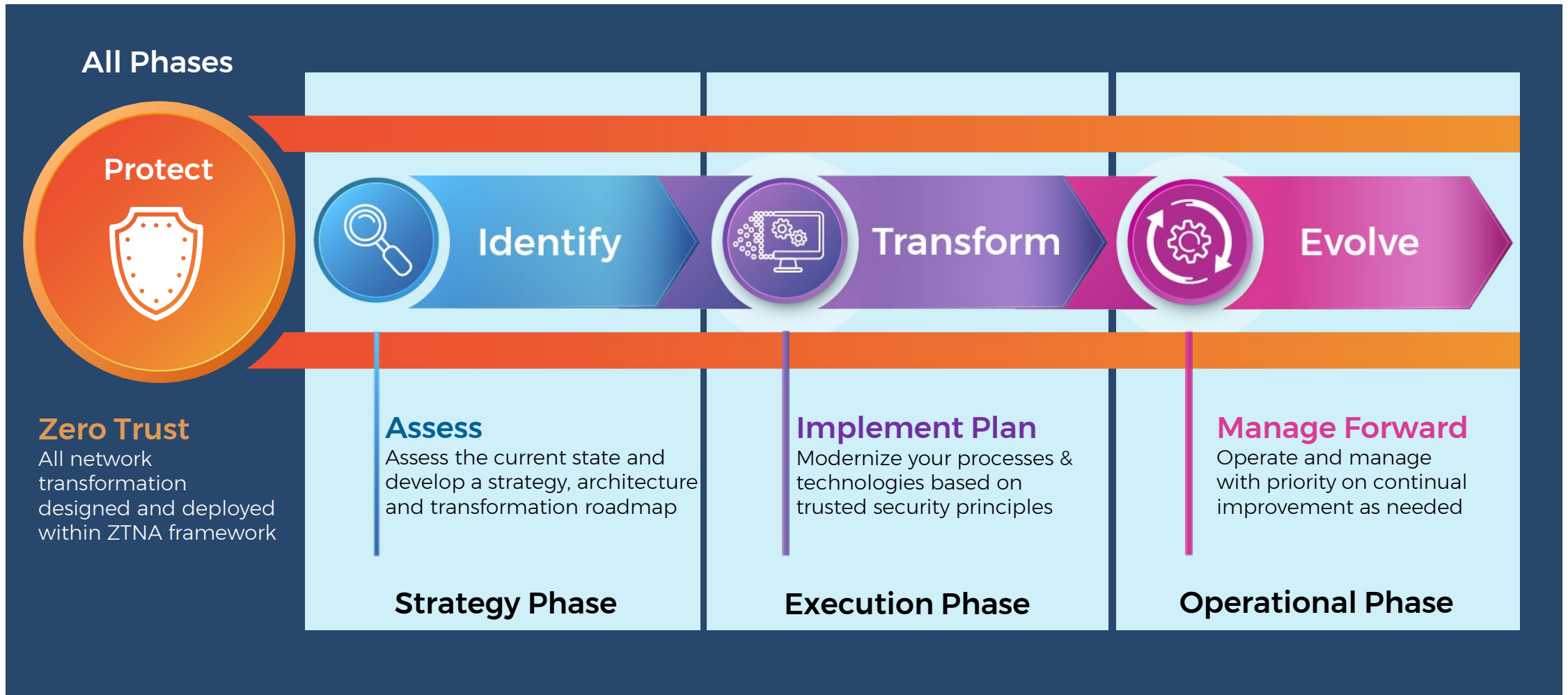
Security

Agility

Resilience

# Our Engagement Model

Three Phased Approach





## 1. IDENTIFY

Identify the current state of the business, network & security, desired future state and develop a **secure** network transformation strategy and plan that aligns with your desired business outcomes



Assess & Analyze

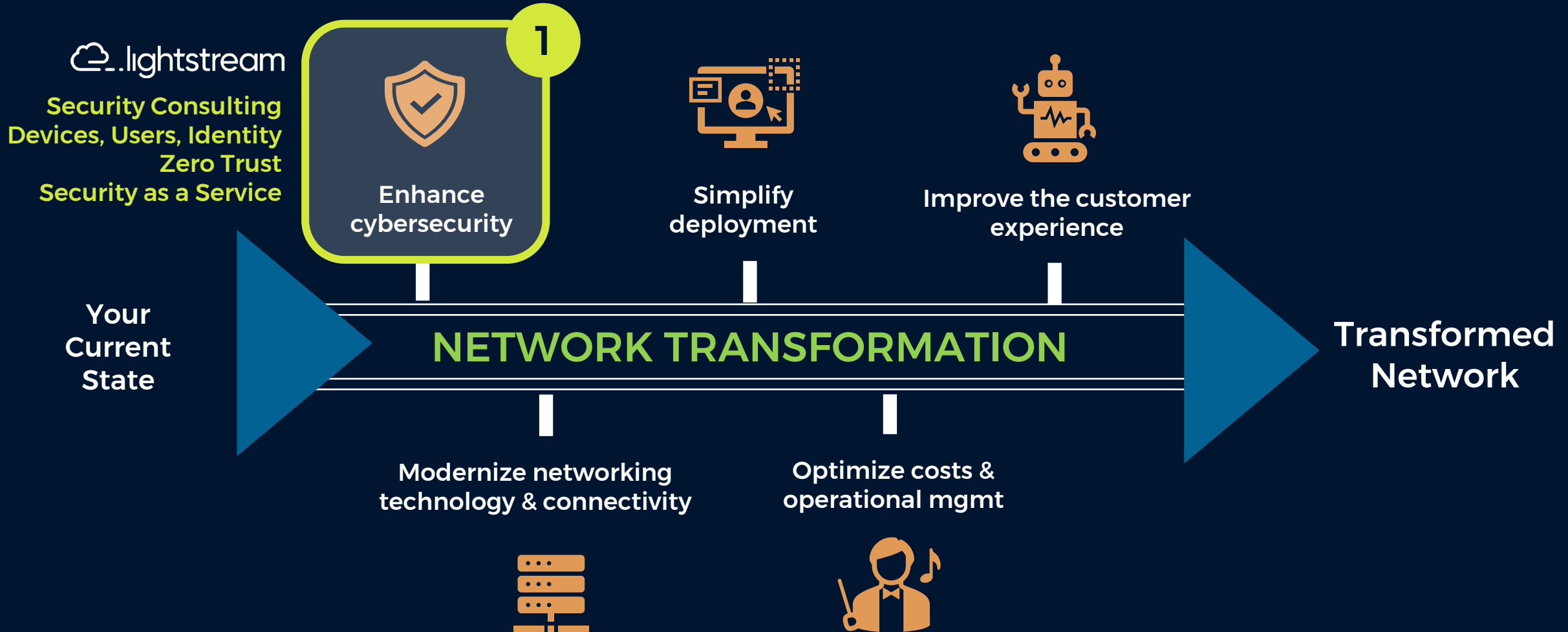


Develop

- Resilient network & security architecture
- Configuration & automation plan
- Implementation plan & schedule

# Secure Network Transformation Process

improves business & cyber resilience





 .lightstream



**PROTECT**  
We Prioritize Security

“Security-first” approach that continuously embeds zero-trust cybersecurity principles into every aspect of your network design and technology stack to ensure cyber resilience

## A security-first approach to architecture & design



Prioritize cybersecurity in every aspect of your network



Embed zero-trust cybersecurity principles



Design and manage an end-to-end secure solution

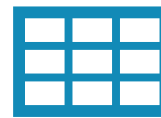
# Zero Trust Framework

Four critical components of a Zero Trust strategy include:



## Assume the network is hostile

There is no longer a perimeter. The new environment is a hybrid of cloud, fixed network, and remote access.



## Understand Your Data and How it Moves

Appropriately classify your data, determine a relative risk associated with the types of data, know how that data is handled and where it is stored/sent (i.e. at rest / in transit)



## Never Trust, Always Verify

Trust no one. Accept the idea that internal and external threats are always on the network. Always verify using as many data sources as possible.



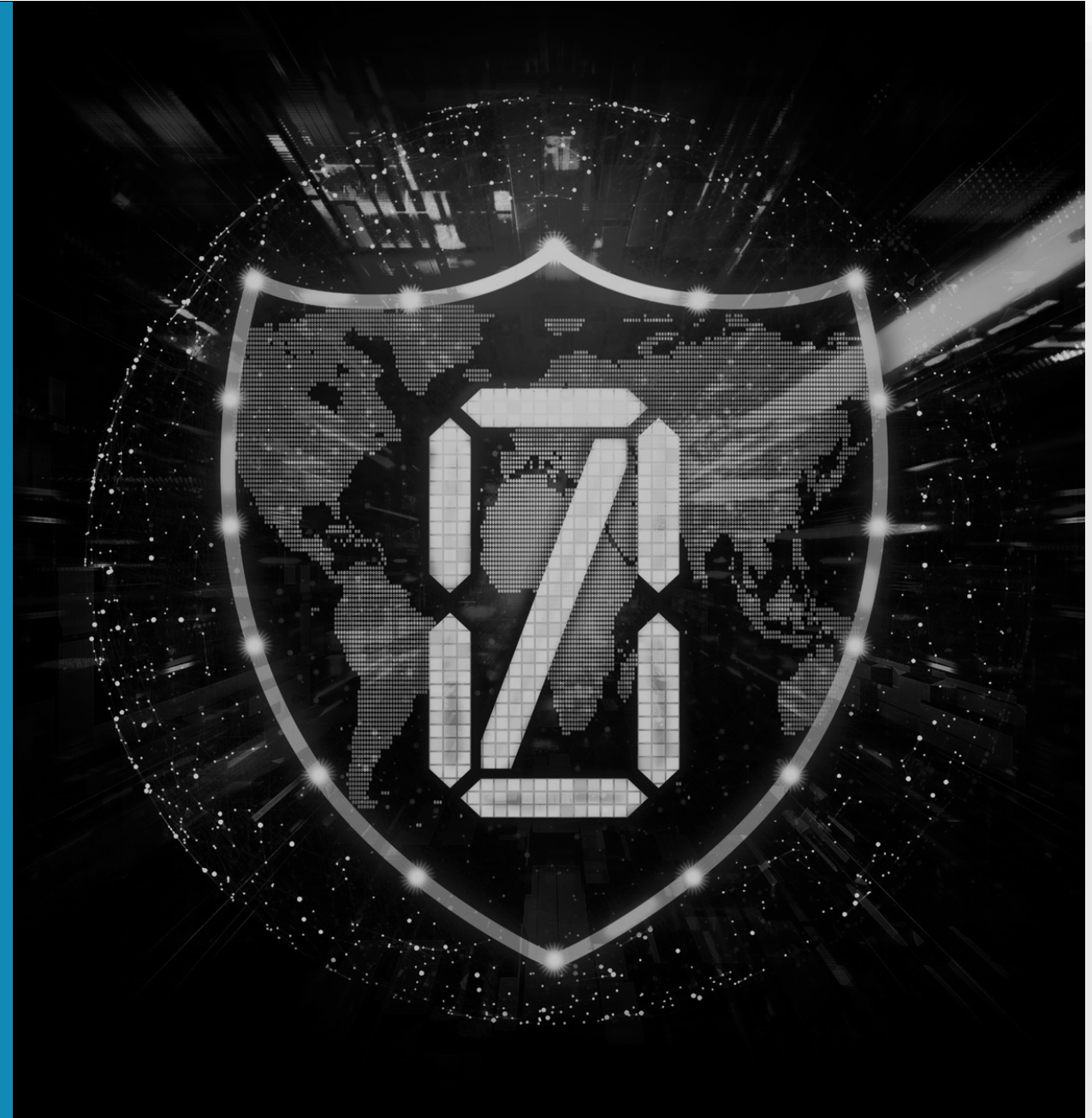
## Implement Least Privilege

Grant the least privileges for someone to perform their duties.

# Zero Trust Readiness Assessment

Assesses the organization on a strategic, managerial and operational level to:

- Determine cybersecurity maturity
- Determine zero-trust preparedness
- Establish a zero-trust architecture
- Practice the Protect Surface measure mapping
- Deliver roadmap with milestones / timelines
- Deliver a customized report and dashboard



# Secure Network Transformation: End to End

Lightstream



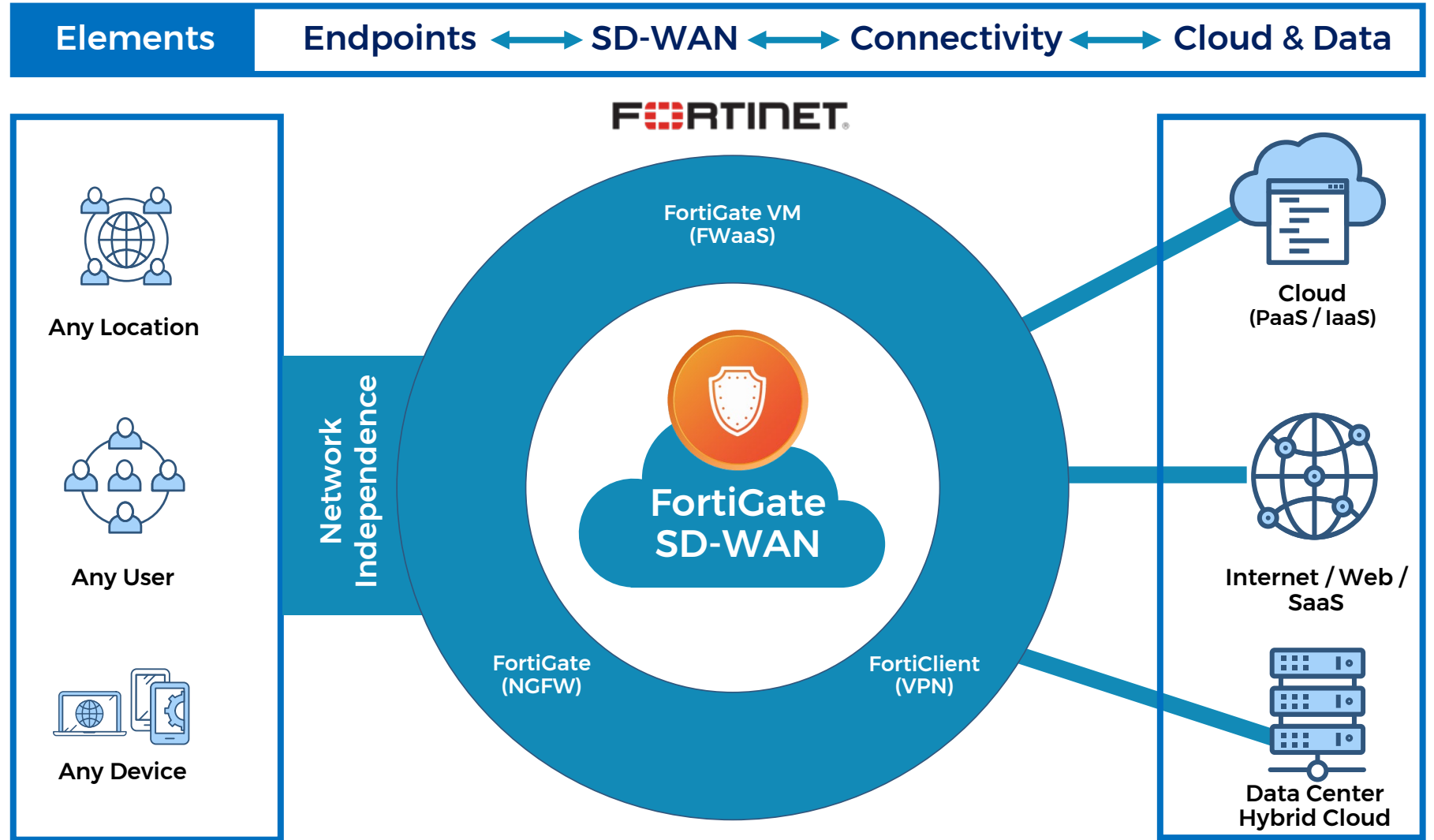
**Security-First Design**

**Platform Strategy & Architecture**

**Procurement, Implementation & Optimization**

**Managed Services & Support**

**FinOps & Analytics**



# Secure Network Transformation: End to End

Lightstream



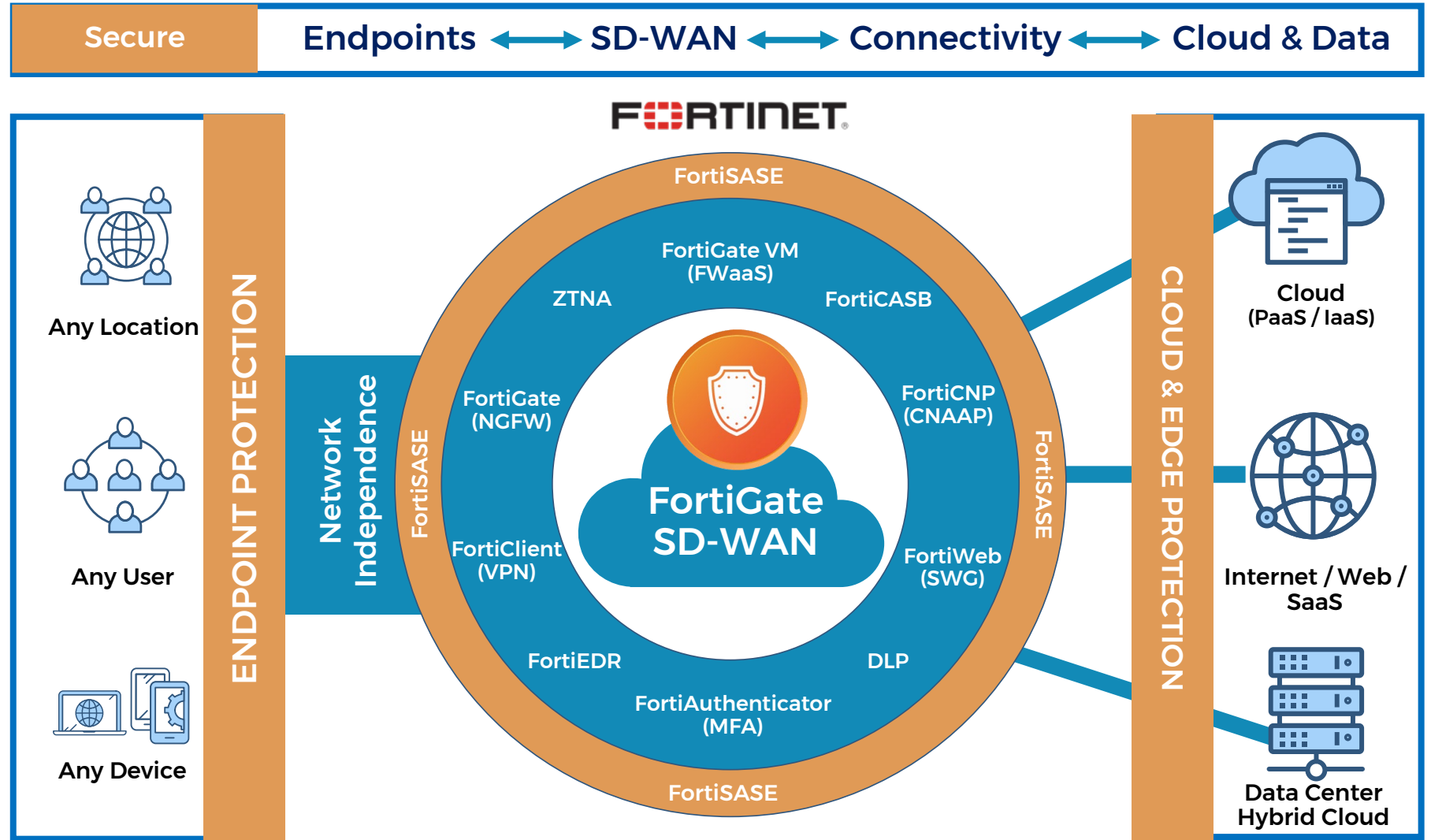
Security-First Design

Platform Strategy & Architecture

Procurement, Implementation & Optimization

Managed Services & Support

FinOps & Analytics





# A full suite of managed services

## Endpoint Protection

Manages the protection of your endpoint devices (Servers, PCs, and mobile devices) using EDR tools

## Managed Firewalls

Management of your on-prem or FWaaS Next Generation Firewalls

## Cloud Security

Management of your cloud-native protection platform

## Network

Manages and supports your SD-WAN, router, switch & WAP devices

## SECURITY OPERATIONS CENTER (SOC)

- Product monitoring, alerting & event management
- Product management (configuration, changes, updates, ...)
- Protect Surface management
- Security incident management & investigative capabilities
- Security improvement management
- Compliance management
- Customized SOPs per client

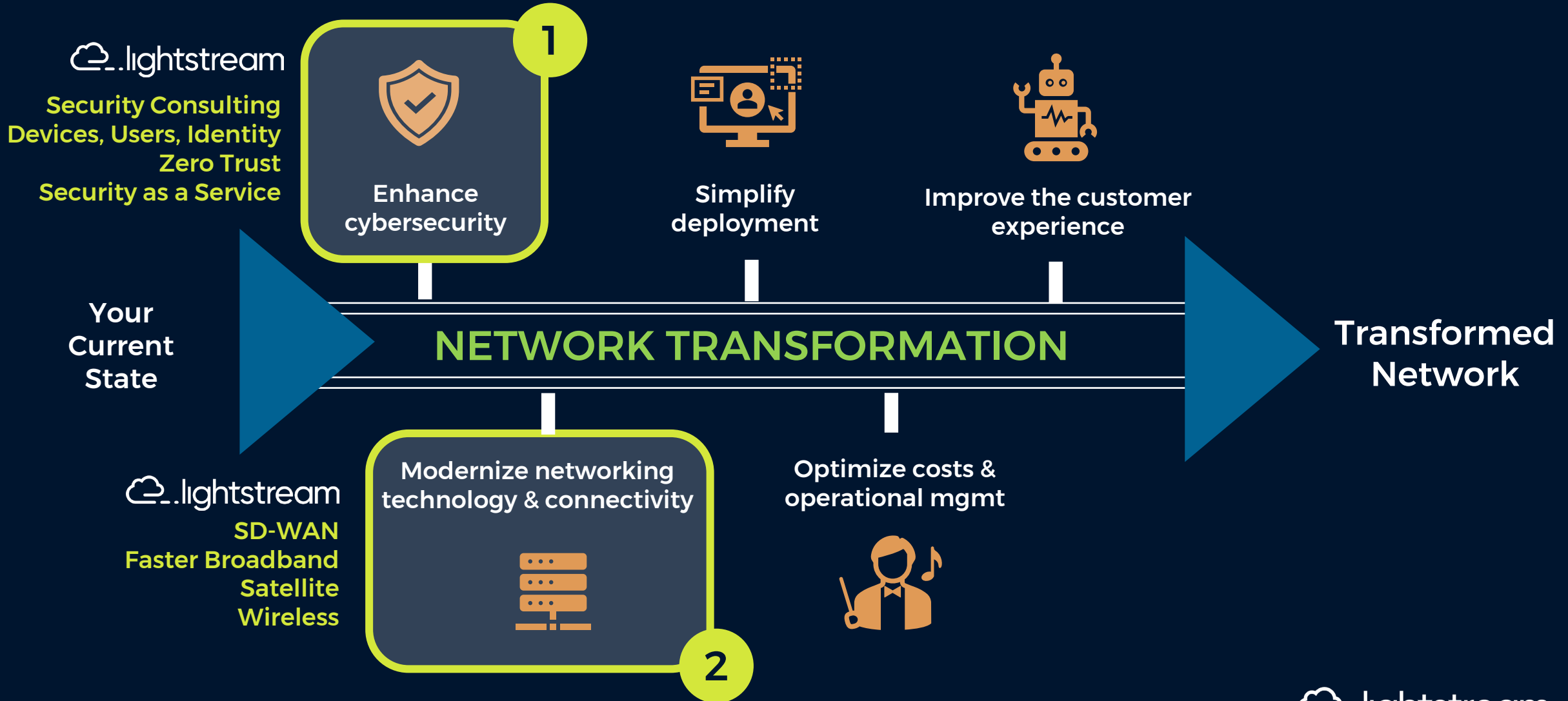
NOC & SOC  
24x7x365

## NETWORK OPERATIONS CENTER (NOC)

- Device management
- Monitoring & alerting
- Event management
- Carrier management
- Customized SOPs
- Consolidated Billing

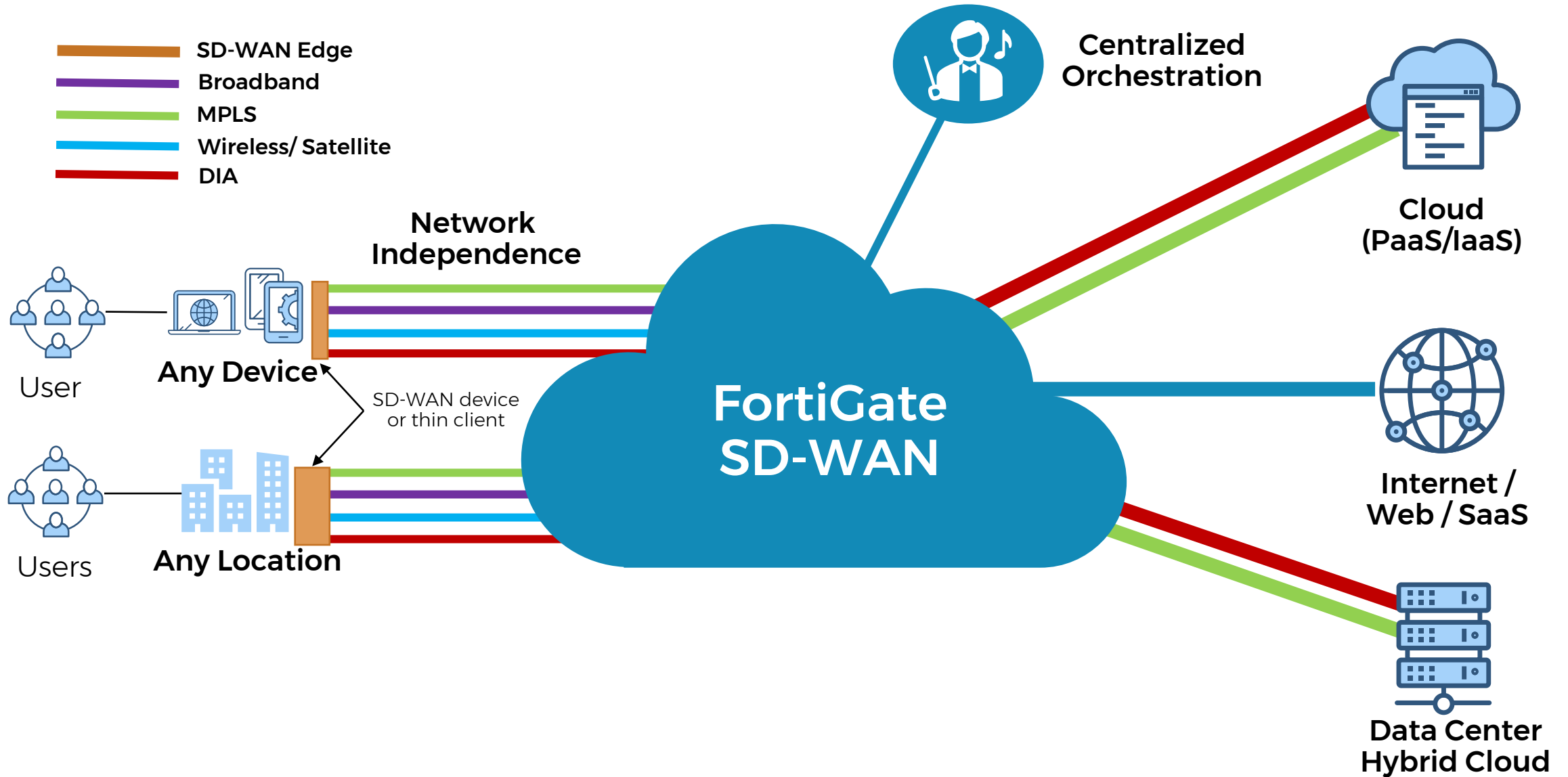
# Secure Network Transformation Process

improves business & cyber resilience



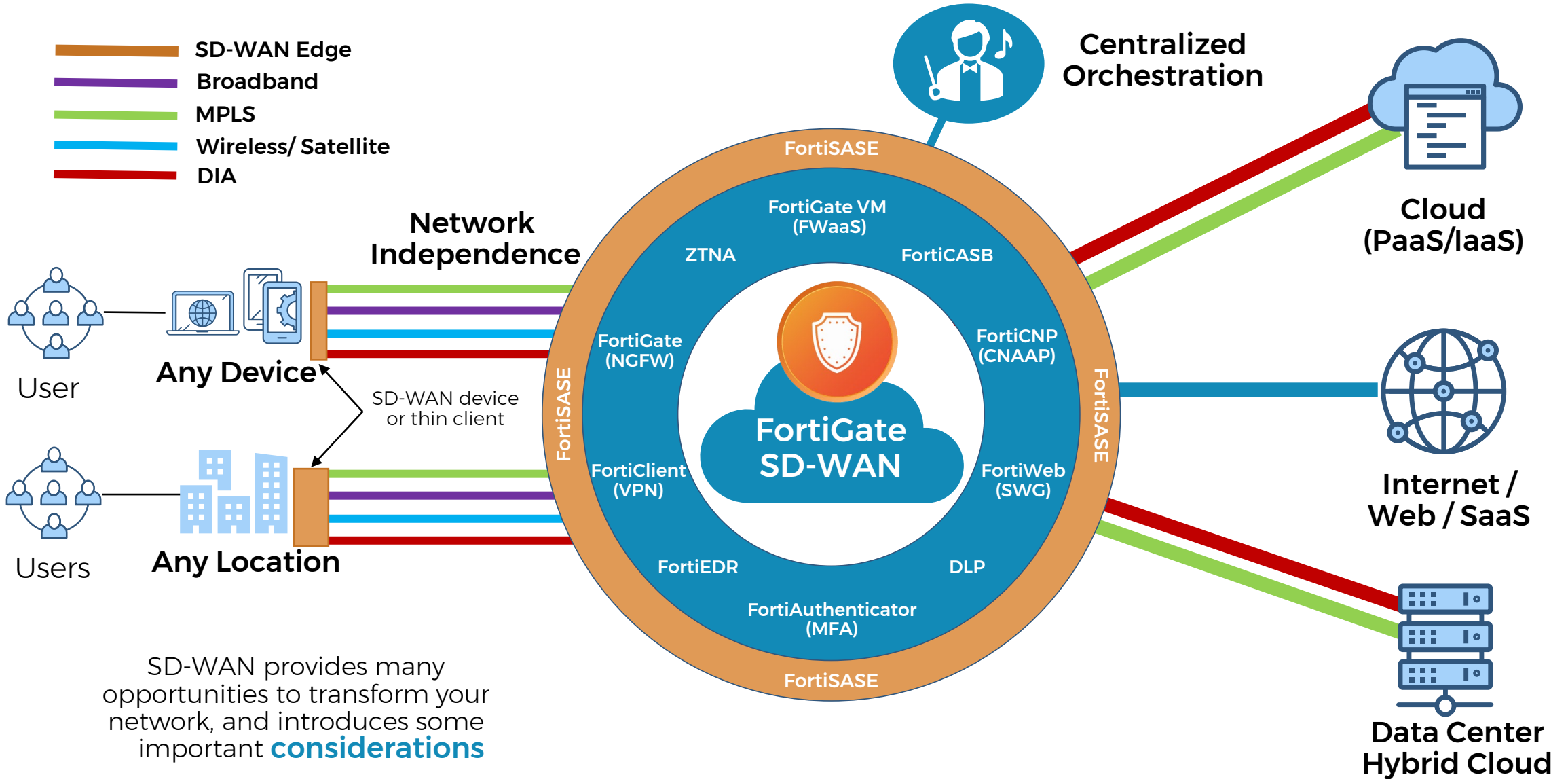
**Lightstream**  
SD-WAN  
Faster Broadband  
Satellite  
Wireless

# SD-WAN Architecture





# Secure SD-WAN & SASE Architecture



# Lightstream's Global Connectivity Solution

SINGLE  
POINT OF  
CONTACT

CUSTOM  
SOLUTIONS

REDUCED  
CARRIER  
COMPLEXITY

- **Global Carrier Services**

- Metro ethernet (Fiber)
- Optical wavelength services
- MPLS
- DIA (Fiber)
- Broadband (Cable)

- **Voice Services**

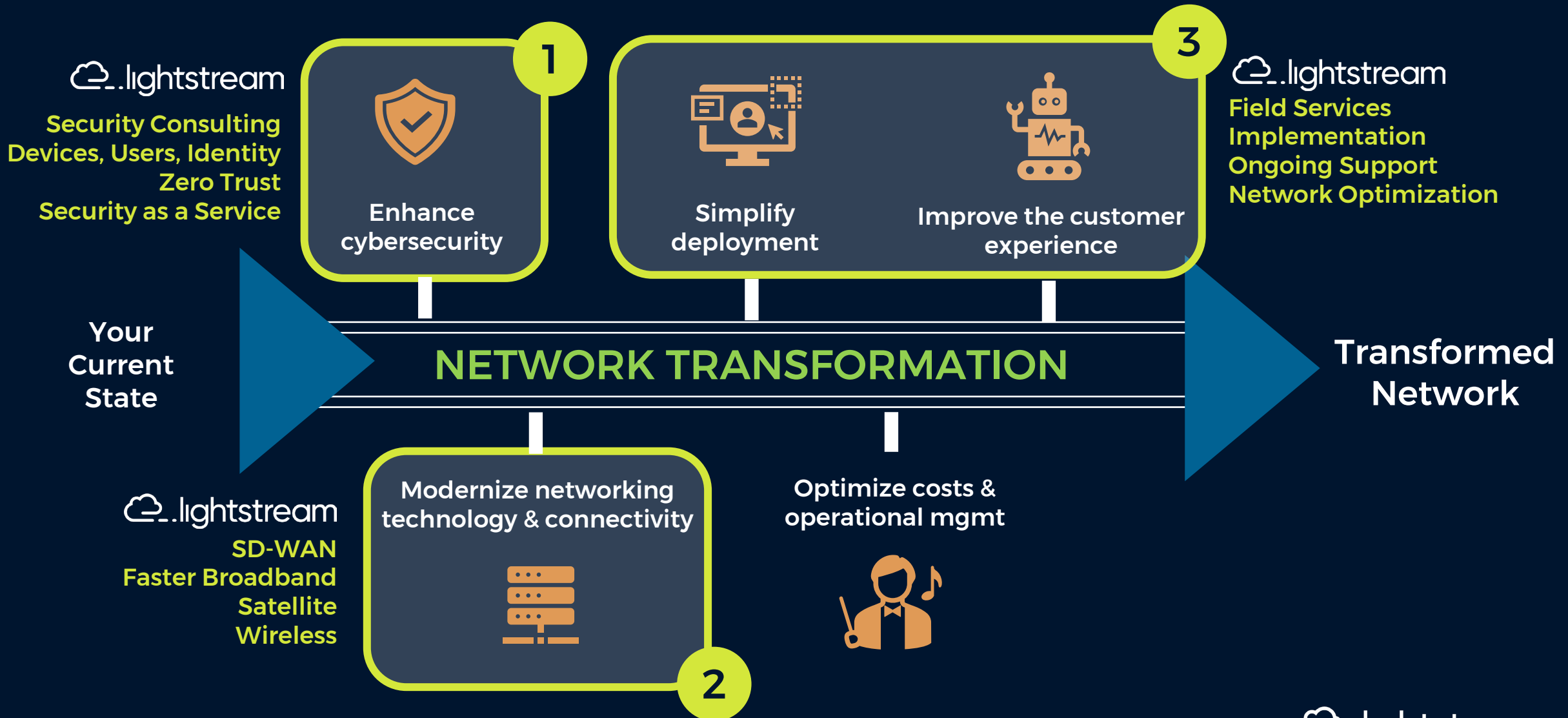
- UCaaS / CCaaS (Ring Central, Zoom, Teams, etc.)
- SIP (local and long distance)
- POTS migration

- **Wireless**

- 4G/5G Multi-vendor solutions
- Satellite

# Secure Network Transformation Process

improves business & cyber resilience





T O U C H

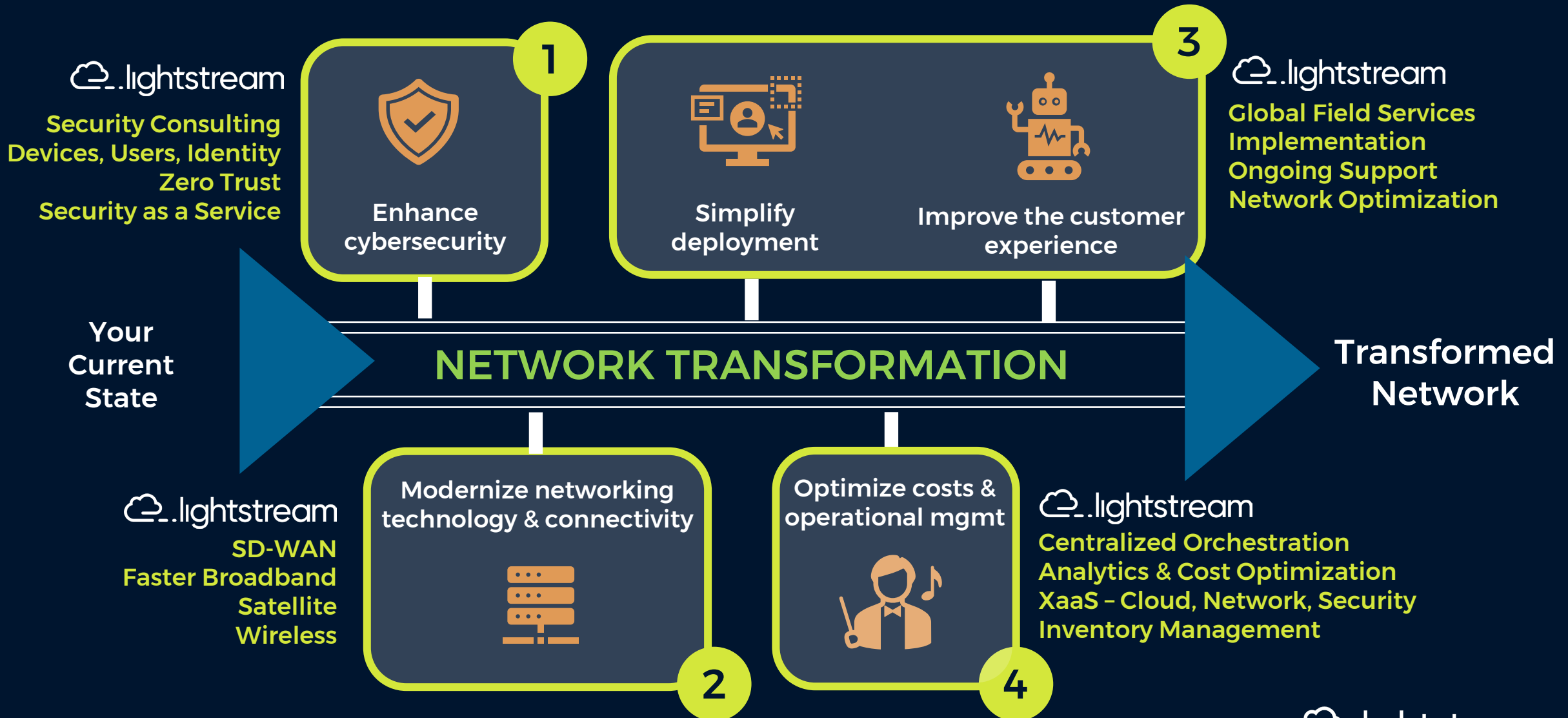
## Deployments

Our consultants can help streamline and simplify your deployment process

- **Professional Services**  
leverage our team of experts to help you make the most of SD-WAN/SASE's centralized management, automation, configuration and cloud integrations
- **Configurations Assistance** to get your network devices, SD-WAN/SASE devices and software profiles set up properly
- **Field Services & Support**  
to help with your onsite deployment needs with cabling, rack & power, setup and installation, etc.
- **Simplified Deployments** to help users to onboard without complication or stress with Zero Touch provisioning for new users

# Secure Network Transformation Process

improves business & cyber resilience



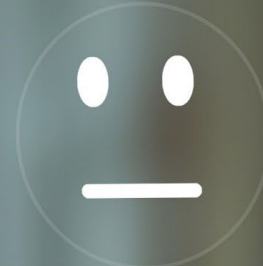
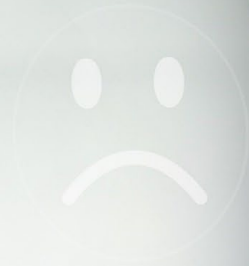
# Optimize Cost & Operational Management



 .lightstream

- **Cost Optimization with Lightstream Connect**  
Analyze cost and utilization for both cloud and connectivity in one tool
  - Inventory/Order management
  - Cloud/Network Cost Optimization
- **Optimize Operational Management**  
Leverage our suite of managed and professional services to
  - Optimize your secure transformed network's technologies
  - Augment your staff's capabilities and ensure 24x7x365 management & support
  - Identify and resolve issues faster

[More Details](#)



## Why work with us?

- Deep experience & solutions you can trust
- World-class talent
- Customer-engaged executive team
- Accessible and friendly culture
- Exceptional support
- High customer satisfaction
- An unparalleled Fortinet partner



Uniquely able to **assess, design, deploy & manage** the entire network

Cybersecurity | Connectivity | Cloud Computing

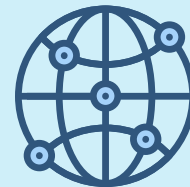
All  
Device Types



Users &  
Locations



Global  
Connectivity



Data &  
Applications



[View Case Studies](#)





Your trusted guide to  
secure digital transformation



Powered by **FORTINET**

Driven by Results